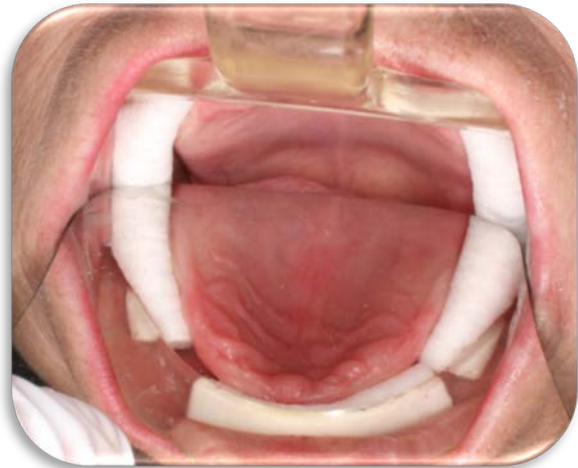


## FULLY EDENTULOUS SCAN PROTOCOL: WITH SOFT TISSUE SEPARATION

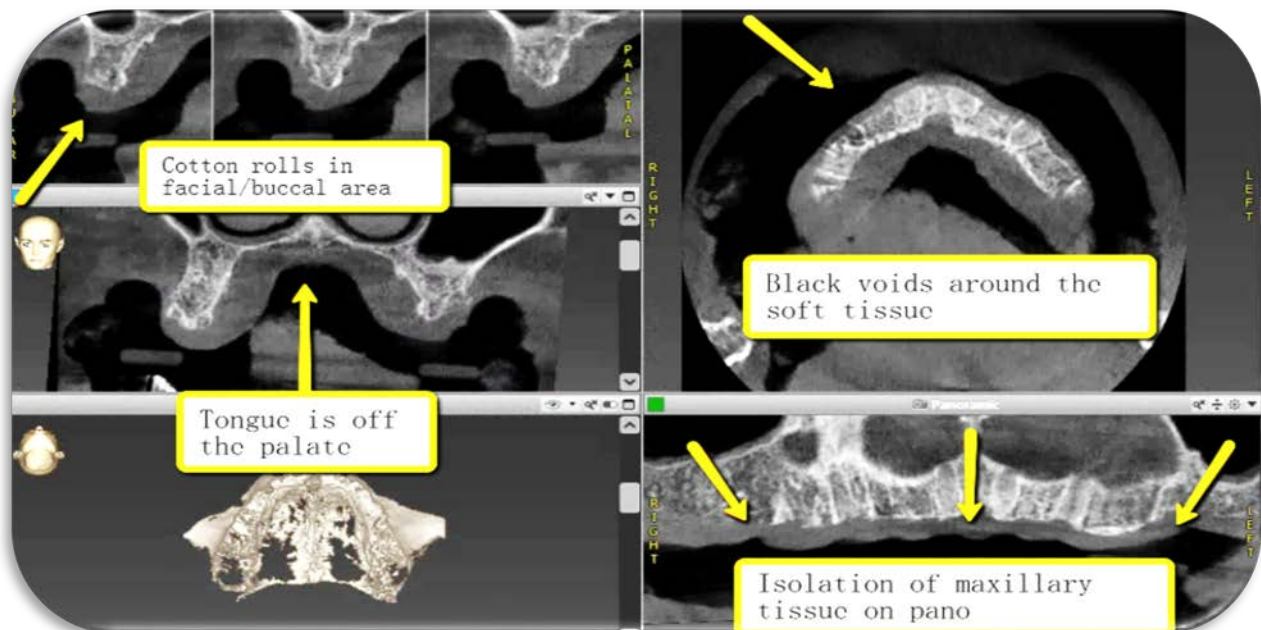
### 1. Take a full arch CBCT scan WITHOUT wearing any appliance:

- i** - Place cotton rolls along the entire arch, in between the cheek and vestibule of the patient.
- For maxillary scans, have the patient rest their tongue at the back of their throat.
- For mandibular scans, place cotton rolls under the tongue.
- Have the patient bite on additional cotton rolls posteriorly and anteriorly.



### 2. Review the scan to ensure that you can clearly see the edentulous ridge:

EXAMPLE OF AN ACCEPTED SCAN:



(866) 977-2228

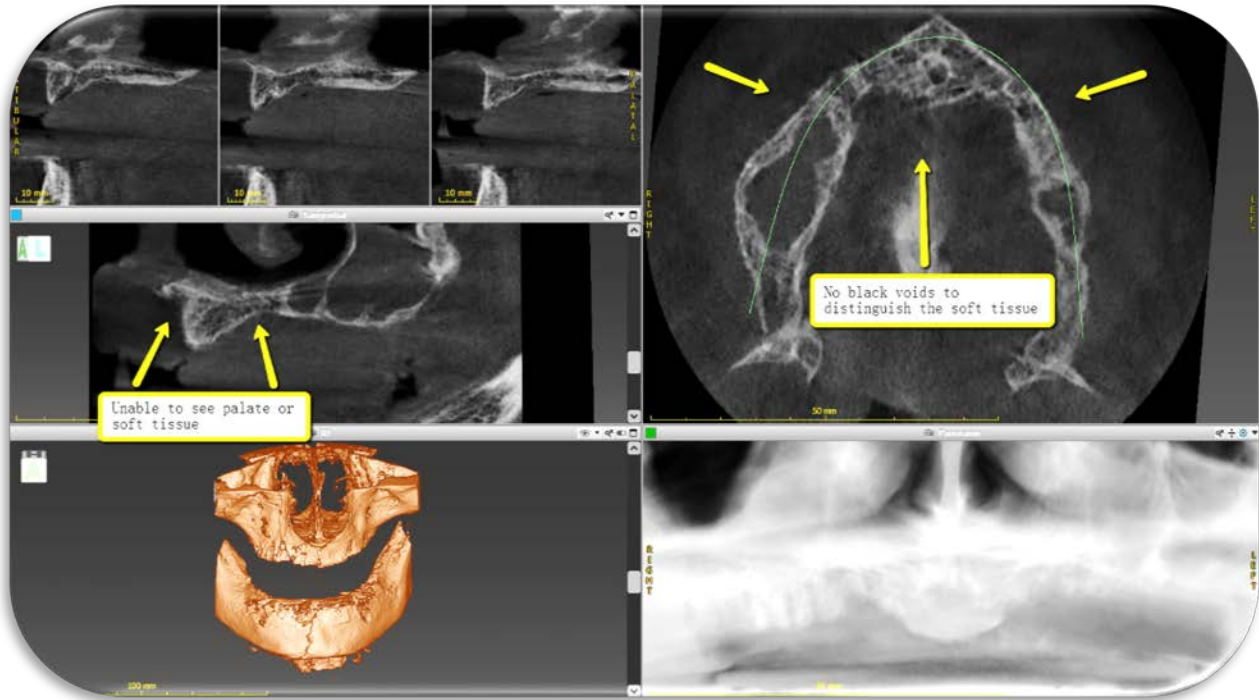
[www.implantconcierge.com](http://www.implantconcierge.com)

©2017, Implant Concierge, LLC.

All rights reserved. Implant Concierge and Virtual Treatment Plan Coordinator are trademarks of IMDDS, LLC.

This product is produced by U.S Patient No. 8.630.869

EXAMPLE OF A REJECTED SCAN:



\*Please note images may vary on CBCT machines\*

### 3. Export and Upload

- i** - Export the scan in a multi-file DICOM format to the desktop. Zip / compress the folder.
- Upload the zip / compressed folder to your Implant Concierge case!

### 4. Take a soft tissue impression of the patient and ship the diagnostic cast to Implant Concierge.

- i** - For more information on exporting DICOM and printing a shipping label, please visit:  
[www.implantconcierge.com/support](http://www.implantconcierge.com/support)