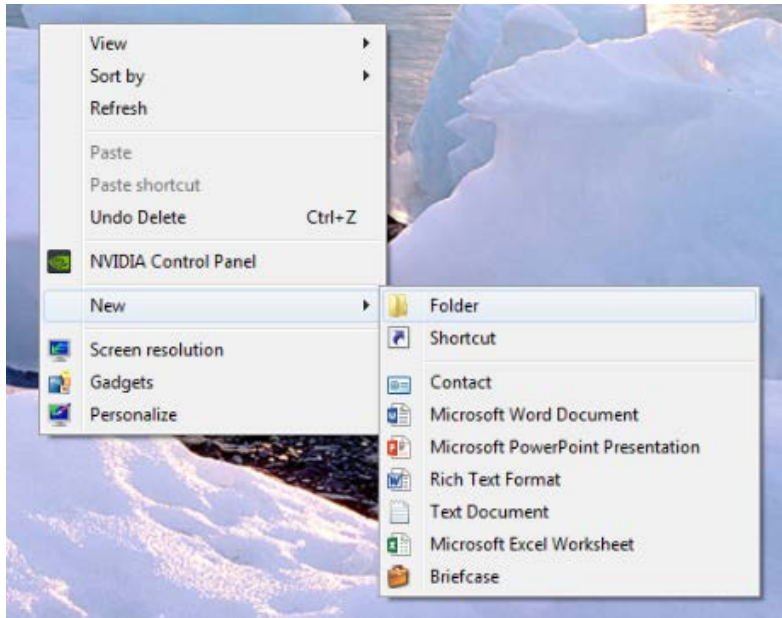
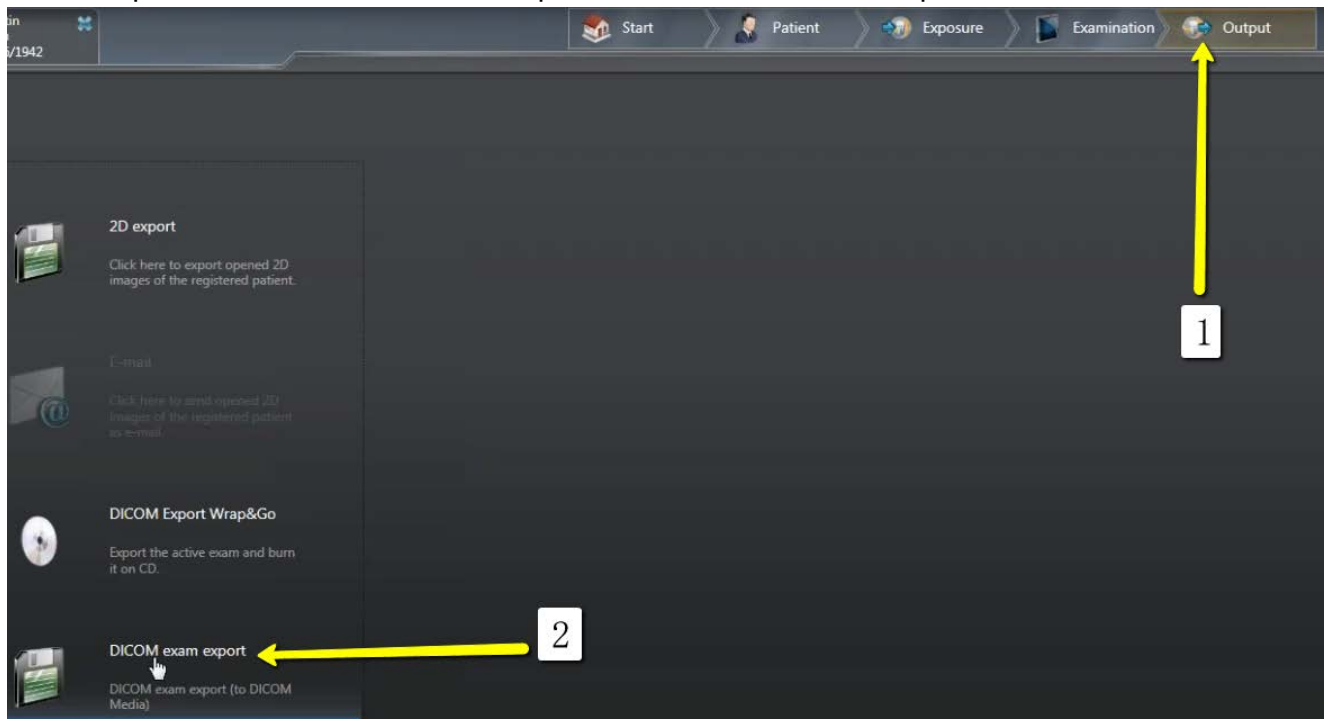


Exporting from Sidexis 4

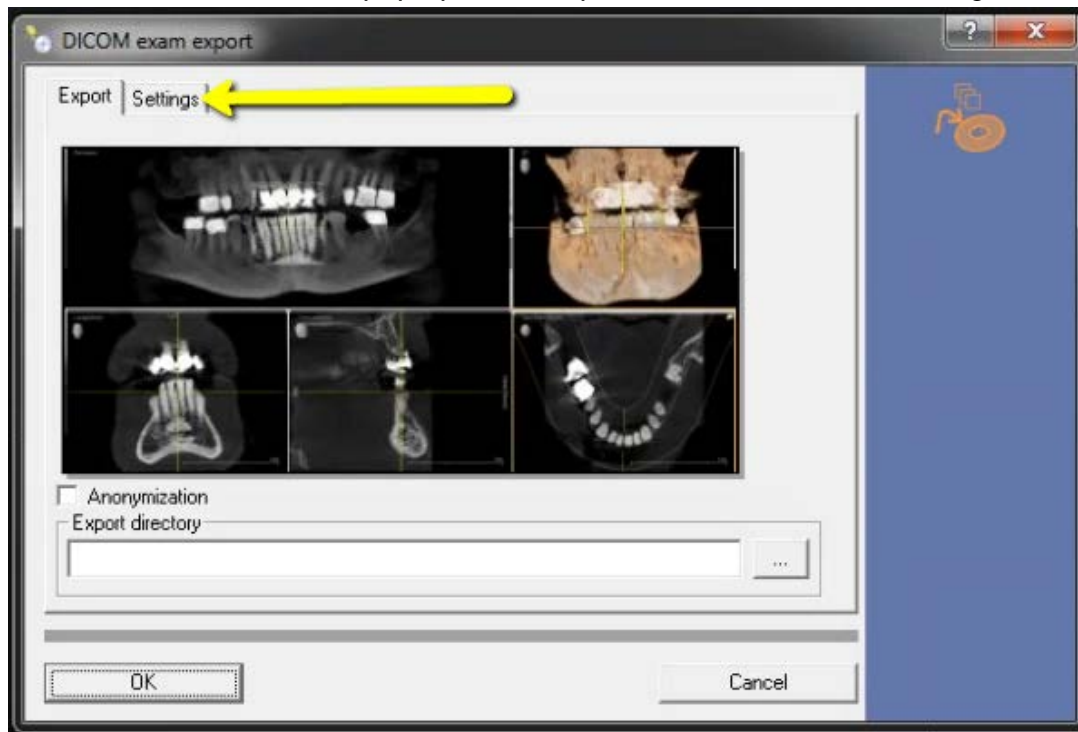
1. On your desktop, right click on an empty space. Go to “New” and click “Folder”. A folder will appear with highlighted blue text. Type in the patient name and push “Enter” on your keyboard.



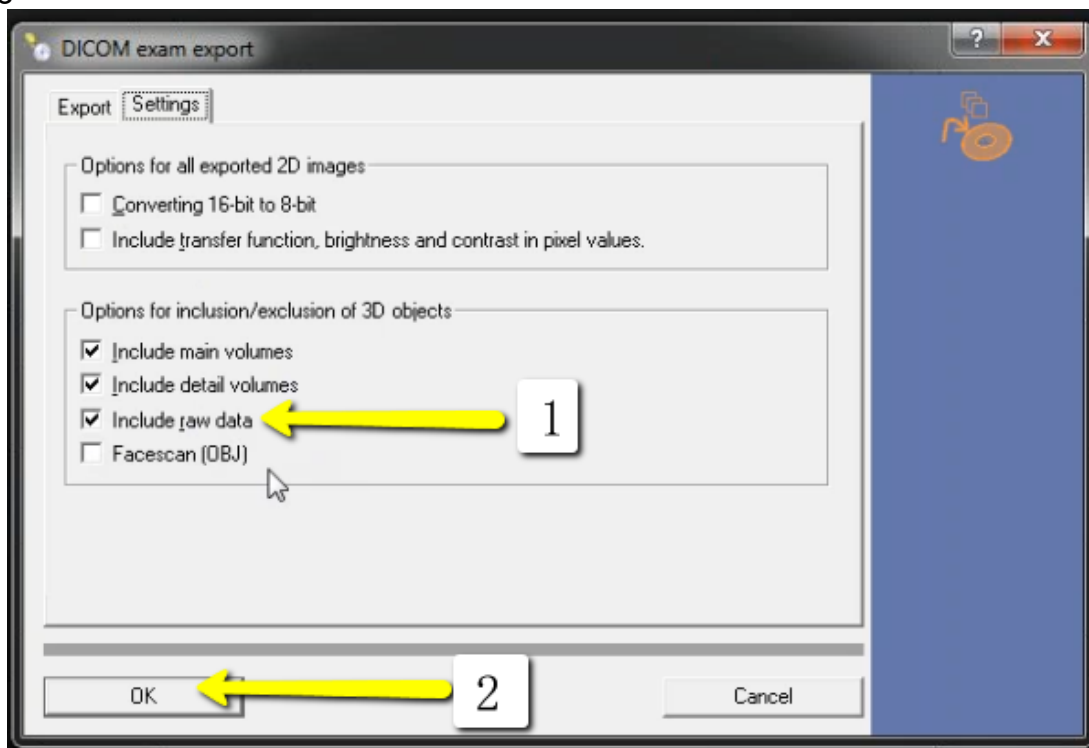
2. Go to patient scan and click on “Output”, then “DICOM Exam Export”.



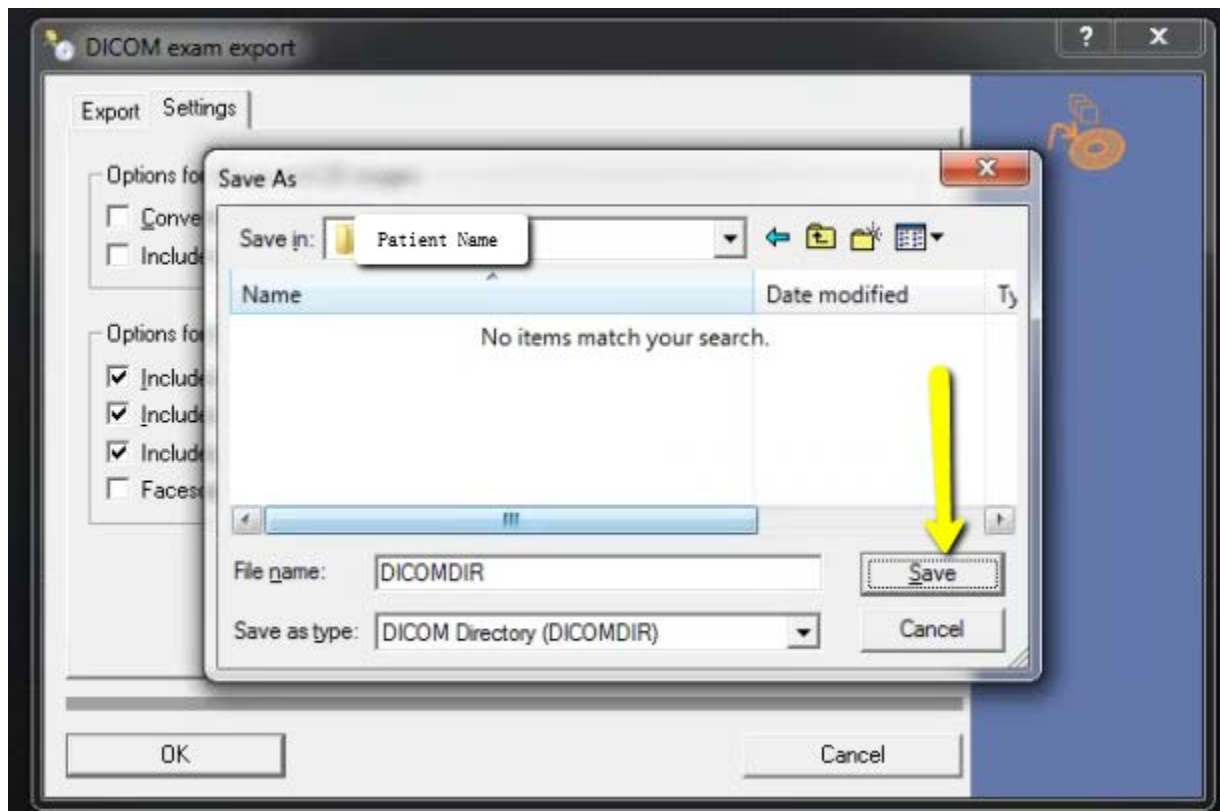
3. An additional window should pop up with the patient scan. Click on “Settings”.



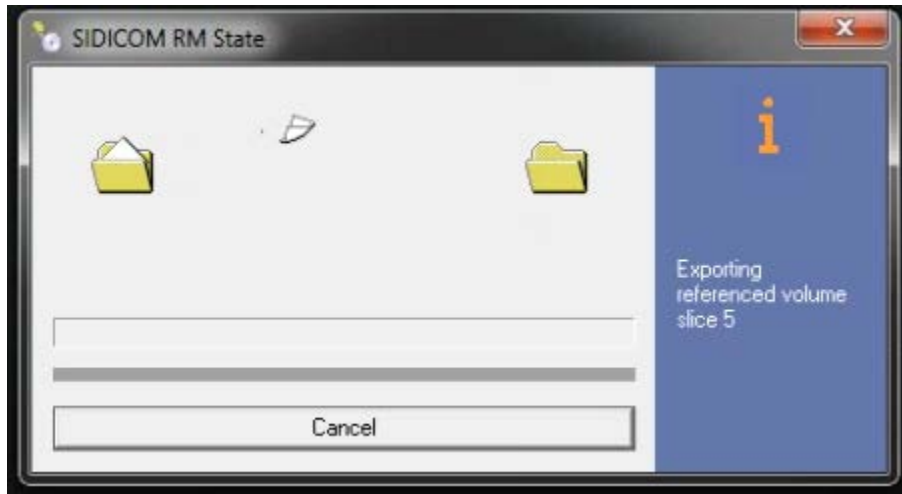
4. Please ensure that “Include Raw Data” is selected. No other options should have to change. Click “OK”.



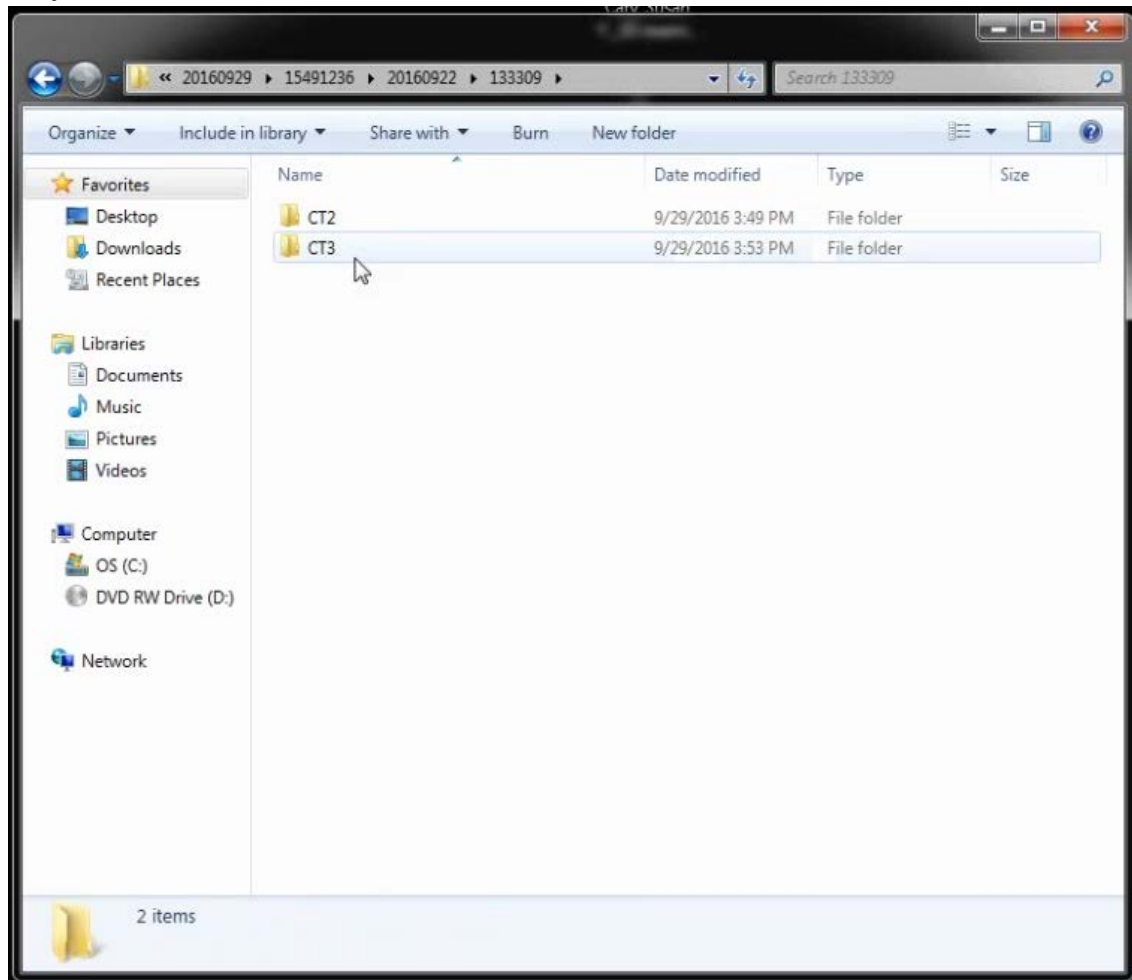
5. Another window should pop up for a save location. Select the folder you just created on the desktop and click “Open”, then “Save”.

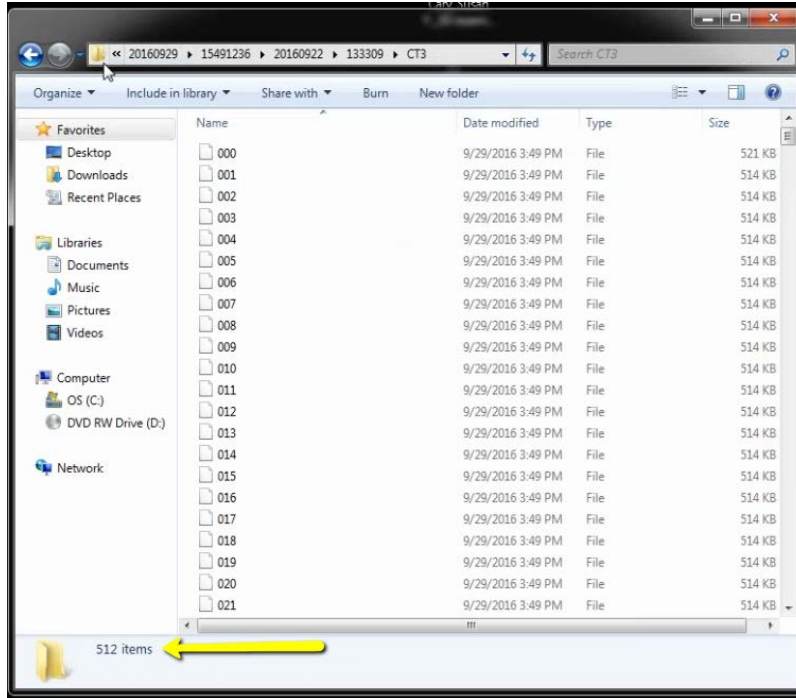


6. Your files will begin exporting.



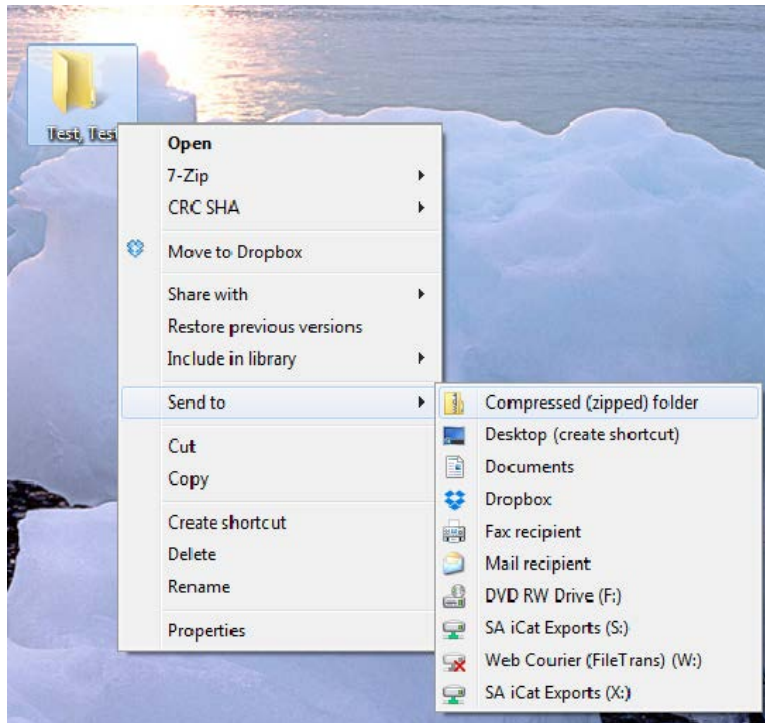
7. After the DICOM exports and saves, go to the folder and look for the sub folder named "CT3" (you may have to open a few folders before you see it). Verify the files were exported correctly; there should be several hundred files.



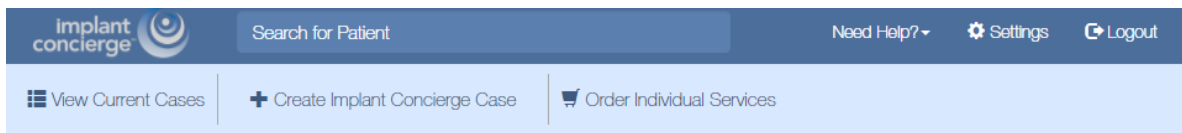


8. Go back to the desktop, right click on the patients folder, go to “Send to”, and select “Compressed (zipped) folder”. A duplicate folder will be made with either a zipper on it, or a blue “Z”.

(*** If following a Dual Scan Protocol, please zip scans individually and label accordingly; i.e: “Patient Scan” and “Denture Scan” ***)



9. To upload the compressed folder, login to Implant Concierge. Click on the patient's name to open the case. Click on the red "Upload DICOM" button.



implant concierge Search for Patient Need Help? Settings Logout

View Current Cases Create Implant Concierge Case Order Individual Services

Current Cases

In Progress Pending Partner Completed All Cases

Invoice(s)

⊘ Indicates an action that has been delayed.

Test, Test

Dr. Demo

Status: New Case

Created: Jun 28, 2017

● Status: Implant Concierge Treatment Planning Case Created

⊘ Pending: Dr. Demo to upload DICOM Multi Files

⊘ Pending: Dr. Demo to upload .STL, or ship Diagnostic Model to Implant Concierge



implant concierge Search for Patient Need Help? Settings Logout

View Current Cases Create Implant Concierge Case Order Individual Services

Case #1380740920 has been created and is waiting for its first action to be completed.

Need help getting started? Call Customer Support: 866-977-2228

Dr. Test Demo

Case Files

+ Additional File(s)

Test Test

Gender: Male | DOB: 0000

Case ID: 1380740920

Options

Next Step

Dr. Demo to upload DICOM Multi Files

Upload DICOM Files

10. Drag and drop the folder from the desktop to Implant Concierge. The file will automatically begin uploading.



The screenshot shows the 'Upload DICOM Files' page. On the left, a desktop background is visible with a folder icon labeled 'Test, Test'. A yellow arrow points from the folder to a callout box. The callout box contains the text: 'Left click to select the correct folder and hold to drag it into the dotted "Drag & Drop" section in Implant Concierge'. Another yellow arrow points from the callout box to the 'Drag & Drop Files' area. The interface includes a header with the patient name 'Test Test' and case number '1380740920'. A yellow box contains instructions: 'Please follow the proper Scan Protocol when scanning the patient.', 'To ensure a successful upload please ZIP your DICOM folder containing only the .DCM Files.', and 'If you need help uploading or zipping a file for upload please call Customer Support: 866-977-2228'. The 'Drag & Drop Files' area is a dashed blue box with the text 'Drag & Drop Files or use the Add DICOM File button below' and 'Once all files have been uploaded click Complete'. Below this is a blue button labeled '+ Add DICOM File'. At the bottom right are 'Cancel' and 'Complete' buttons.

Upload DICOM Files

Patient: Test Test
Case Number: 1380740920

- Please follow the proper Scan Protocol when scanning the patient.
- To ensure a successful upload please ZIP your DICOM folder containing only the .DCM Files.
- If you need help uploading or zipping a file for upload please call Customer Support: 866-977-2228

Drag & Drop Files

or use the Add DICOM File button below

Once all files have been uploaded click Complete

Test, Test.zip (142.2 mb) 14%

+ Add DICOM File

Cancel

Complete

11. Once the file reaches 100%, click the green “Complete” button.

Upload DICOM Files

Patient: Test Test

Case Number: 1380740920

- Please follow the proper Scan Protocol when scanning the patient.
- To ensure a successful upload please ZIP your DICOM folder containing only the .DCM Files.
- If you need help uploading or zipping a file for upload please call Customer Support: 866-977-2228

Drag & Drop Files

or use the Add DICOM File button below

Once all files have been uploaded click Complete

Test, Test.zip (142.2 mb) 100%

+ Add DICOM File

✕ Cancel

✓ Complete